

BUCCAL TUBES

NEW LOW PROFILE MERIDIAN TUBE

LOW PROFILE
METAL INJECTION MOLDED
(MIM) STAINLESS STEEL

DISTINCT "CROSSHAIR"
HORIZONTAL AND VERTICAL
PLACEMENT SIGHT LINES
WITH COLOR-CODED ID
CENTER "BULLSEYE"
POSITIONING FEATURE

**AVAILABLE IN 4.2MM
OR 3.2MM MESIAL/
DISTAL DIMENSION**
FOR FULL ROTATIONAL
CONTROL

BALANCED
TO FACILITATE EASIER
BONDING

SLEEK HOOK DESIGN
FOR ULTIMATE PATIENT
COMFORT AND SIMPLIFIED
BONDING

FUNNELED ENTRANCE
FOR EASIER WIRE
INSERTION

**MICRO-ETCHED 80
GAUGE MESH BASE**
FOR ENHANCED BOND
STRENGTH



ANGLED OCCLUSAL WALL
TO AVOID INTERFERENCE

PARALLEL WALL
FOR IMPROVED GRIP
WHEN HANDLING

**OCCLUSAL/ GINGIVAL
PLACEMENT GUIDES AL-**
LOW FOR EASY PLACEMENT
AT THE POSTERIOR REGION
AND ASSIST WITH MINOR
ADJUSTMENTS PRIOR TO
CURING THE ADHESIVE

ANATOMICALLY FORMED BASE
WITH DEVELOPMENTAL INDENT
FOR PRECISE FIT AND
POSITIONING

SINGLE NON-CONVERTIBLE MAXILLARY 1ST AND 2ND MOLAR

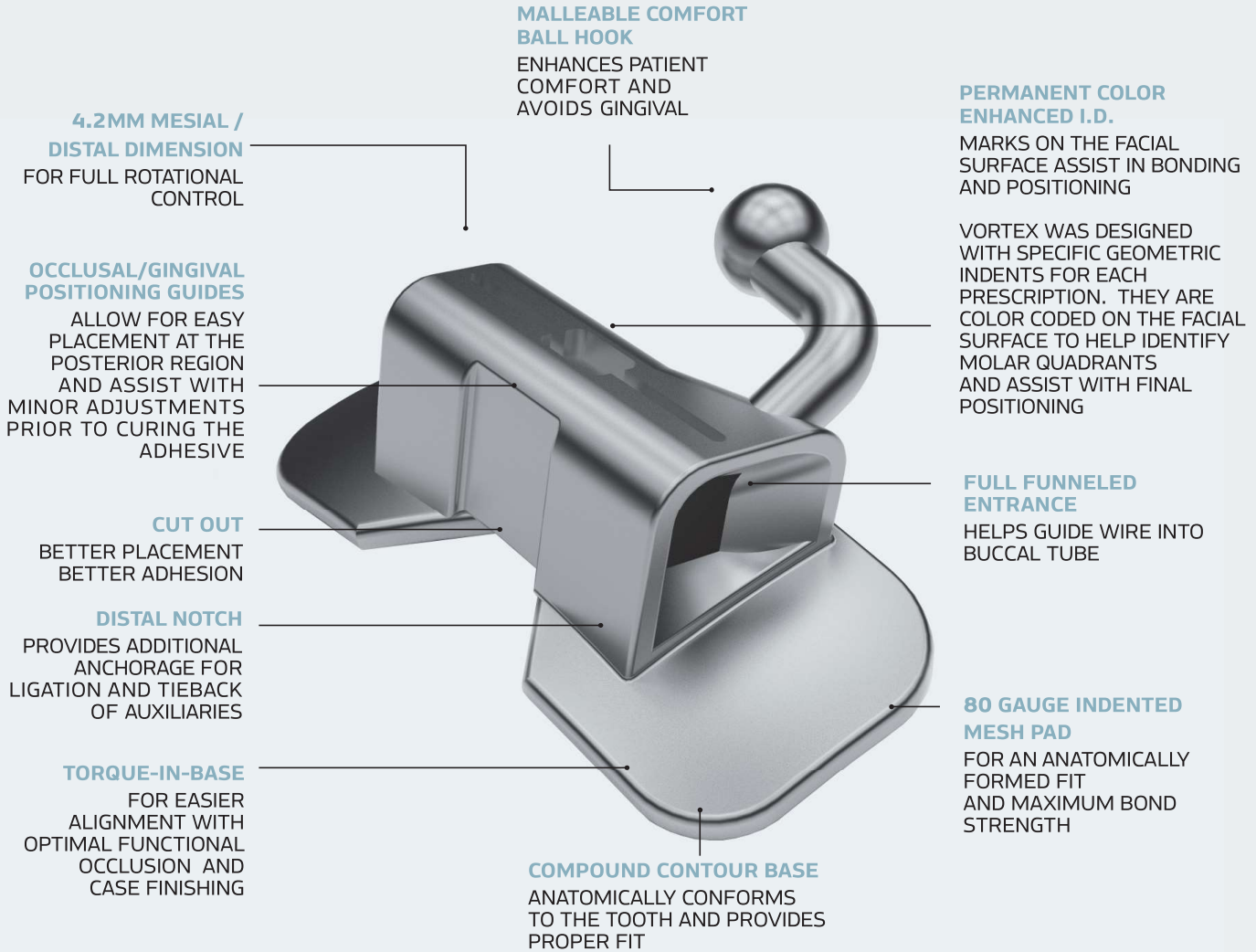
							BONDABLE: 1ST MOLAR		BONDABLE: 2ND MOLAR	
	TORQUE	OFFSET	RX	M/D	R/L	ID	.018	.022	.018	.022
	-14°	10°	MBT†	4.2 MM	R L	● ●	BO-2094 BO-2093	BO-2090 BO-2089	BO-3001 BO-3002	BO-2097 BO-2098
	-10°	8°	ROTH†	4.2 MM	R L	● ●	BO-3012 BO-3011	BO-3008 BO-3007	BO-3016 BO-3015	BO-3020 BO-3019

SINGLE NON-CONVERTIBLE MANDIBULAR 1ST AND 2ND MOLAR

					WELDABLE	BONDABLE: 1ST MOLAR		BONDABLE: 2ND MOLAR		
	TORQUE	OFFSET	RX	M/D	R/L	ID	.018	.022	.018	.022
	-20°	0°	MBT†	3.2 MM	R L	● ●	BO-2096 BO-2095	BO-2092 BO-2091	BO-3003 BO-3004	BO-2099 BO-3000
	-25°	5°	ROTH†	3.2 MM	R L	● ●	BO-3014 BO-3013	BO-3010 BO-3009	BO-3018 BO-3017	BO-3022 BO-3021

VORTEX

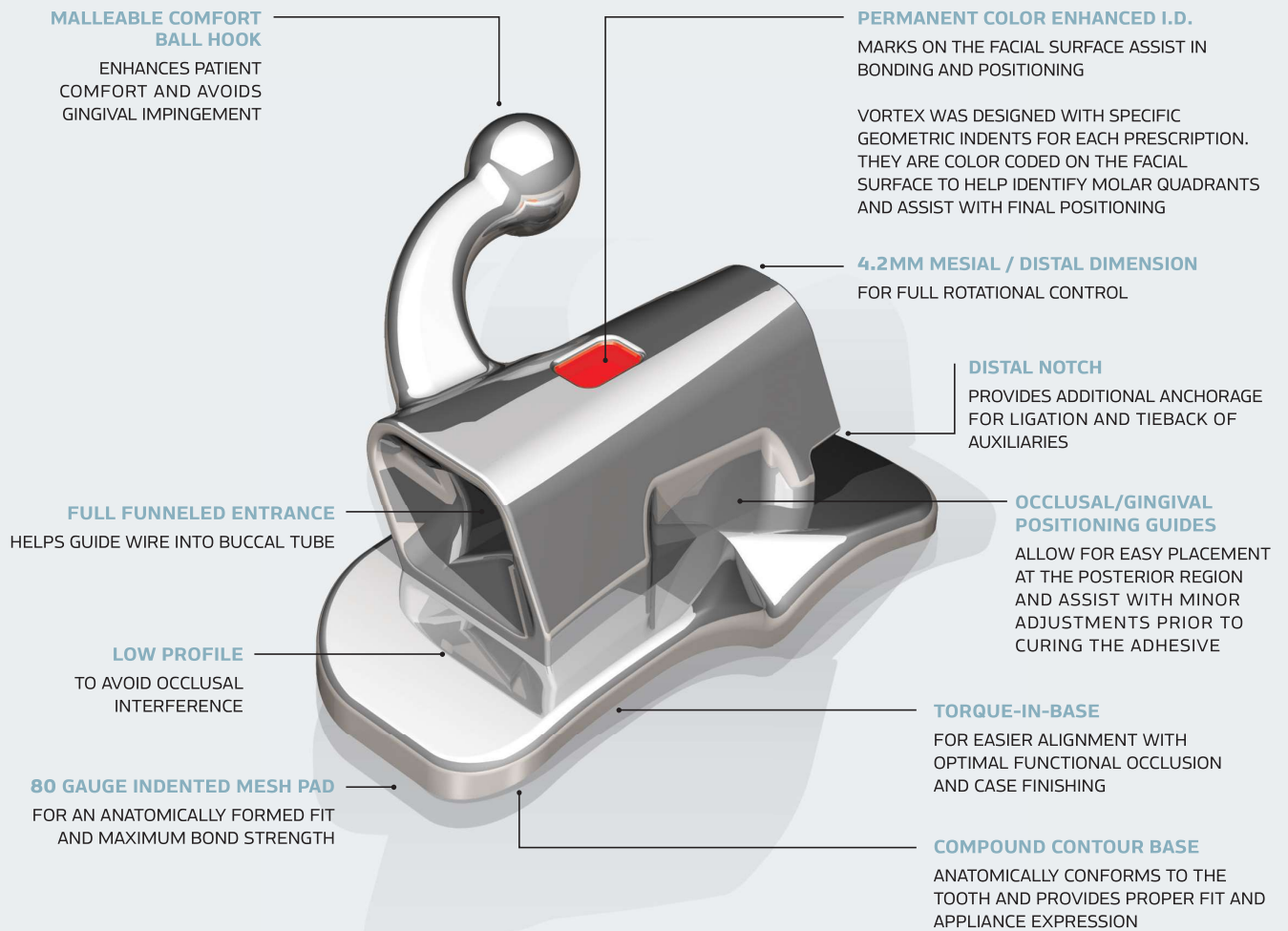
CUT OUT BUCCAL TUBES



MAXILLARY & MANDIBULAR					
R/L	ID	.022 MBT		.018 MBT	
		1ST	2ND	1ST	2ND
UR	●	BO-2067	BO-2084	BO-2101	BO-2105
UL	●	BO-2066	BO-2083	BO-2100	BO-2104
LR	●	BO-2069	BO-2086	BO-2103	BO-2107
LL	●	BO-2068	BO-2085	BO-2102	BO-2106

VORTEX

LOW PROFILE BUCCAL TUBES





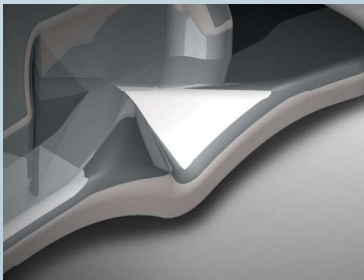
TRUMPETED ENTRANCE SAVES TIME

WHITE OAK HAS ELIMINATED THE FRUSTRATION AND WASTED TIME OF THREADING A WIRE INTO THE SMALL OPENING OF TRADITIONAL BUCCAL TUBES. THE VORTEX'S TRUMPETED ENTRANCE FACILITATES EASY WIRE INSERTION. WIRES ARE GUIDED EASILY AND GENTLY INTO VORTEX'S EXPANSIVE ENTRANCE, SIMPLIFYING ARCH WIRE ADJUSTMENTS AND SAVING VALUABLE CHAIR TIME.



CUSTOM WELDING

VORTEX BUCCAL TUBES ARE ALSO AVAILABLE CUSTOM WELDED ONTO OUR INTEGRITY BANDS TO MEET YOUR PARTICULAR NEEDS AND PROVIDE ADDED CONVENIENCE. FROM CONSISTENT QUALITY PRODUCTS THAT YOU CAN DEPEND ON EVERY TIME, TO CUSTOM APPLICATIONS, WHITE OAK IS HERE TO HELP YOUR PRACTICE THRIVE.



DEVELOPMENTAL INDENT

WHITE OAK'S BUCCAL TUBES WERE DESIGNED WITH EASY PLACEMENT IN MIND. BECAUSE PRECISE POSITIONING IS CRITICAL FOR EFFECTIVE TREATMENT BY AVOIDING OCCLUSAL INTERFERENCE WITH OPPOSING TEETH, WE DESIGNED OUR BOND PADS WITH PRONOUNCED DEVELOPMENTAL INDENTS TO MAKE LOCATING THE OPTIMAL BONDING POSITION A SNAP.



UNIQUE PAD DESIGN

WHITE OAK'S BUCCAL TUBES FEATURE A COMPOUND RADIUS PAD THAT MIRRORS THE UNIQUE CONTOUR OF A MOLAR'S CLINICAL CROWN. A UNIQUELY CRAFTED DISTAL GINGIVAL CUTOUT ENABLES THE BONDING OF PARTIALLY ERUPTED MOLARS WITHOUT SACRIFICING THE SIZE AND STRENGTH OF THE PAD.

MOLDED COMPOUND CONTOUR BASE

ANATOMICALLY CONFORMS TO THE TOOTH AND PROVIDES PROPER FIT AND APPLIANCE EXPRESSION.

80 GAUGE FOIL MESH

FEATURING AN 80 GAUGE FOIL MESH BASE, OUR VORTEX DIRECT BOND TUBES ARE SURE TO MEET ALL OF YOUR TREATMENT NEEDS.

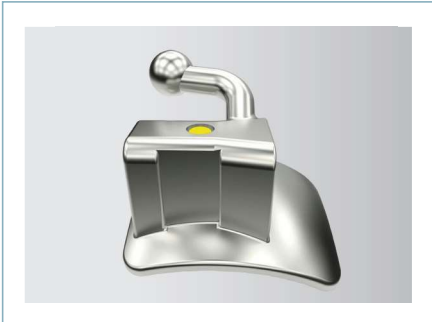
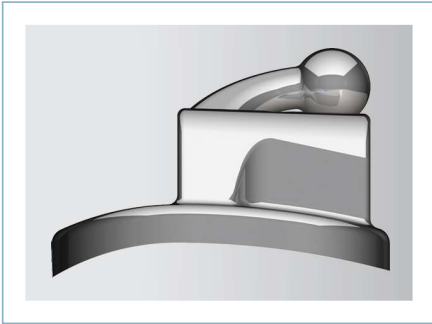


SINGLE NON-CONVERTIBLE MAXILLARY 1ST AND 2ND MOLAR					WELDABLE		BONDABLE: 1ST MOLAR		BONDABLE: 2ND MOLAR	
	RX	M/D	R/L	ID	.018	.022	.018	.022	.018	.022
	STD	4.2MM	R	◆	WD-1261	WD-1262	BO-1029	BO-1030	BO-1023	BO-1024
			L	◆	WD-1259	WD-1260	BO-1027	BO-1028	BO-1025	BO-1026
	ROTH†	4.2MM	R	●	WD-1269	WD-1270	BO-1059	BO-1060	BO-1061	BO-1062
			L	●	WD-1267	WD-1268	BO-1055	BO-1056	BO-1057	BO-1058
	MBT†	4.2MM	R	●	WD-1265	WD-1266	BO-1043	BO-1044	BO-1045	BO-1046
			L	●	WD-1263	WD-1264	BO-1039	BO-1040	BO-1041	BO-1042

SINGLE NON-CONVERTIBLE MANDIBULAR 1ST AND 2ND MOLAR					WELDABLE		BONDABLE: 1ST MOLAR		BONDABLE: 2ND MOLAR	
	RX	M/D	R/L	ID	.018	.022	.018	.022	.018	.022
	STD	4.2MM	R	◆	WD-1249	WD-1250	BO-1027	BO-1028	BO-1025	BO-1026
			L	◆	WD-1247	WD-1248	BO-1029	BO-1030	BO-1023	BO-1024
	ROTH†	4.2MM	R	■	WD-1257	WD-1258	BO-1051	BO-1052	BO-1053	BO-1054
			L	■	WD-1255	WD-1256	BO-1047	BO-1048	BO-1049	BO-1050
	MBT†	4.2MM	R	▲	WD-1253	WD-1254	BO-1035	BO-1036	BO-1037	BO-1038
			L	▲	WD-1251	WD-1252	BO-1031	BO-1032	BO-1033	BO-1034

SINGLE NON-CONVERTIBLE WIDE MOUTH MAXILLARY 1ST AND 2ND MOLAR					WELDABLE		BONDABLE: 1ST MOLAR		BONDABLE: 2ND MOLAR	
	RX	M/D	R/L	ID	.018	.022	.018	.022	.018	.022
	MBT†	4.2MM	R	▲	-	-	BO-2033	BO-2021	BO-2037	BO-2025
			L	▲	-	-	BO-2032	BO-2020	BO-2036	BO-2024

SINGLE NON-CONVERTIBLE WIDE MOUTH MANDIBULAR 1ST AND 2ND MOLAR					WELDABLE		BONDABLE: 1ST MOLAR		BONDABLE: 2ND MOLAR	
	RX	M/D	R/L	ID	.018	.022	.018	.022	.018	.022
	MBT†	4.2MM	R	▲	-	-	BO-2035	BO-2023	BO-2039	BO-2027
			L	▲	-	-	BO-2034	BO-2022	BO-2038	BO-2026



VORTEX LOW PROFILE MINI 2ND TUBE

SPECIALLY DESIGNED FOR PARTIALLY ERUPTED 2ND MOLARS

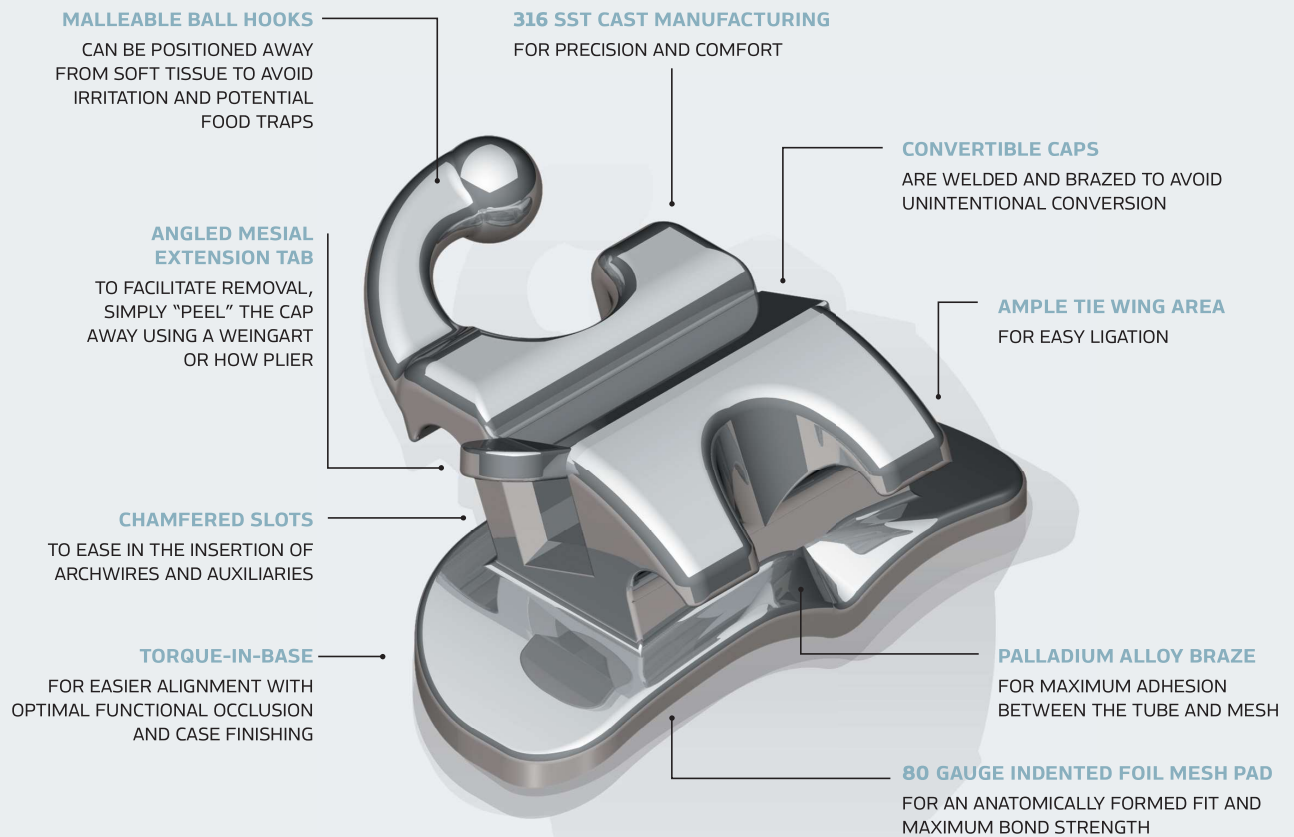
VORTEX MINI LOW PROFILE BUCCAL TUBES INCORPORATE ALL OF THE GREAT FEATURES OF OUR STANDARD VORTEX SERIES, BUT IN A SMALL FEATURE-RICH DESIGN THAT ALLOWS FOR EARLIER BONDING OF PARTIALLY ERUPTED SECOND MOLARS. THE VORTEX'S TRUMPETED ENTRANCE FACILITATES EASY WIRE INSERTION. WIRES ARE GUIDED EASILY AND GENTLY INTO VORTEX'S EXPANSIVE ENTRANCE, SIMPLIFYING ARCHWIRE ADJUSTMENTS AND SAVING VALUABLE CHAIR TIME. BONDS EASILY, WITH LESS SOFT TISSUE TRAUMA.

- TRUMPETED OPENING FOR EASY INSERTION OF WIRES.
- COMFORT HOOK DESIGN PROVIDES MAXIMUM PATIENT COMFORT.
- DESIGNED TO FIT EASILY AND PRECISELY ON THE MESIAL BUCCAL CUSP OF 2ND MOLARS.
- BI-DIRECTIONAL PYLONS ON BASE COUPLED WITH OUR EDM SURFACE FINISH ENHANCES BOND STRENGTH.
- THE MESIALLY PLACED COMPOUND CONTOUR PAD ALLOWS MORE SURFACE AREA FOR ADDITIONAL BOND STRENGTH.

MAXILLARY AND MANDIBULAR MINI 2ND MOLAR							
TORQUE	OFFSET	M/D	R/L	ID	.018	.022	
-14°	0°	-	UR UL	● ●	BO-2013 BO-2012	BO-2009 BO-2008	
-20°	0°	-	LR LL	■ ■	BO-2015 BO-2014	BO-2011 BO-2010	

MERIDIAN

BUCCAL TUBES



WHITE OAK'S MERIDIAN BUCCAL TUBE LINE OFFERS MINIATURIZED CAST BUCCAL TUBES WITH ROUNDED SURFACES FOR EXCEPTIONAL PATIENT COMFORT AND ACCEPTANCE.

**AVAILABLE THREE WAYS:
BONDABLE, WELDABLE OR PRE-WELDED**

ALL BUCCAL TUBES OFFERED BY WHITE OAK ARE AVAILABLE WITH DIRECT BOND BASES, WELDABLE BASES, OR PRE-WELDED ON OUR INTEGRITY BANDS TO MEET YOUR SPECIFIC NEEDS AND PROVIDE ADDED CONVENIENCE. FROM CONSISTENT QUALITY PRODUCTS THAT YOU CAN DEPEND ON EVERY TIME, TO CUSTOM APPLICATIONS, WHITE OAK IS HERE TO HELP YOUR PRACTICE THRIVE.

COMFORT IS IN THE DESIGN

WHITE OAK'S ADVANCED CASTING TECHNOLOGY ALLOWS FOR NOT ONLY INCREASED STRENGTH, BUT ALSO THE FREEDOM OF DESIGN TO PRODUCE SMALLER PRECISION TUBES TO INCREASE CLINICAL EFFICIENCY AND PATIENT COMFORT. BOTH OCCLUSAL INTERFERENCE AND GINGIVAL IMPINGEMENT ARE REDUCED, AND HYGIENE IS IMPROVED. ALL CONVERTIBLE TUBES INCORPORATE A TRUE "TWIN" BRACKET TIE WING DESIGN TO AID IN LIGATION. OUR COMBINATION TUBES ALSO INCORPORATE A DISTINCTIVE TIE WING DESIGN FOR SECURE LIGATION FOLLOWING ARCHWIRE SLOT CONVERSION, AND ARE OFFSET FROM THE GINGIVAL TO AVOID TISSUE IMPINGEMENT.



SINGLE CONVERTIBLE MAXILLARY 1ST MOLAR						WELDABLE		BONDABLE: LARGE BASE		BONDABLE: SMALL BASE	
TORQUE	OFFSET	RX	M/D	R/L	.018	.022	.018	.022	.018	.022	
/	-10°	0°		3.5MM	R	WD-1181	WD-1182	BO-1129	BO-1131	BO-1130	BO-1132
					L	WD-1179	WD-1180	BO-1121	BO-1123	BO-1122	BO-1124
	-10°	5°		3.5MM	R	WD-1185	WD-1186				
					L	WD-1183	WD-1184				
/	-10°	8°	ROTH†	3.5MM	R	WD-1189	WD-1190	BO-1133	BO-1135	BO-1134	BO-1136
					L	WD-1187	WD-1188	BO-1125	BO-1127	BO-1126	BO-1128
/	-10°	12°		3.5MM	R	WD-1193	WD-1194				
					L	WD-1191	WD-1192				

SINGLE CONVERTIBLE MANDIBULAR 1ST MOLAR						WELDABLE		BONDABLE: LARGE BASE		BONDABLE: SMALL BASE	
TORQUE	OFFSET	RX	M/D	R/L	.018	.022	.018	.022	.018	.022	
/	-20°	0°	MBT†	3.5MM	R	WD-1169	WD-1170	BO-1113	BO-1115	BO-1114	BO-1116
					L	WD-1167	WD-1168	BO-1105	BO-1107	BO-1106	BO-1108
/	-25°	5°	ROTH†	3.5MM	R	WD-1173	WD-1174	BO-1117	BO-1119	BO-1118	BO-1120
					L	WD-1171	WD-1172	BO-1109	BO-1111	BO-1110	BO-1112
/	-25°	12°		3.5MM	R	WD-1177	WD-1178				
					L	WD-1175	WD-1176				

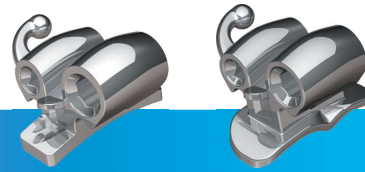


LOW-PROFILE SINGLE CONVERTIBLE MAXILLARY			
RX	M/D	R/L	.022
EDGEWISE	4.0MM	R L	BO-1006 BO-1004
ROTH†	4.0MM	R L	BO-1022 BO-1020
MBT†	4.0MM	R L	BO-1014 BO-1012



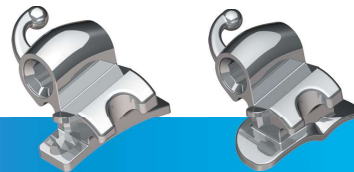
LOW-PROFILE SINGLE CONVERTIBLE MANDIBULAR			
RX	M/D	R/L	.022
EDGEWISE	4.0MM	R L	BO-1004 BO-1006
ROTH†	4.0MM	R L	BO-1018 BO-1016
MBT†	4.0MM	R L	BO-1010 BO-1008

† THE WHITE OAK VERSION OF THE MBT AND ROTH RX IS NOT IMPLIED TO BE AN EXACT VERSION OF ANY OTHER SYSTEM, NOR DO WE CLAIM ANY ENDORSEMENT BY THE DOCTORS.



**TRIPLE CONVERTIBLE HG OCCLUSAL
MAXILLARY 1ST MOLAR**

							WELDABLE	
TORQUE	OFFSET	RX	HG I.D.	AUX TUBE	M/D	R/L	.018	.022
-10°	8°	ROTH†	.045° OCCL	.018/0° T	3.5MM	R L	WD-1241 WD-1239	WD-1242 WD-1240
-10°	8°	ROTH†	.051° OCCL	.018/0° T	3.5MM	R L	WD-1245 WD-1243	WD-1246 WD-1244
-14°	10°	MBT†	.045° OCCL	.018/0° T	3.5MM	R L	WD-1233 WD-1231	WD-1234 WD-1232
-14°	10°	MBT†	.051° OCCL	.018/0° T	3.5MM	R L	WD-1237 WD-1235	WD-1238 WD-1236



**COMBINATION CONVERTIBLE HG GINGIVAL
MAXILLARY 1ST MOLAR**

						WELDABLE	
TORQUE	OFFSET	RX	HG I.D.	M/D	R/L	.018	.022
-10°	8°	ROTH†	.045° GING	3.5MM	R L	WD-1079 WD-1077	WD-1080 WD-1078
-10°	8°	ROTH†	.051° GING	3.5MM	R L	WD-1083 WD-1081	WD-1084 WD-1082
-14°	10°	MBT†	.045° GING	3.5MM	R L	WD-1071 WD-1069	WD-1072 WD-1070
-14°	10°	MBT†	.051° GING	3.5MM	R L	WD-1075 WD-1073	WD-1076 WD-1074

**COMBINATION CONVERTIBLE HG GINGIVAL
MANDIBULAR 1ST MOLAR**

						WELDABLE	
TORQUE	OFFSET	RX	HG I.D.	M/D	R/L	.018	.022
-25°	5°	ROTH†	.045° GING	3.5MM	R L	WD-1067 WD-1065	WD-1068 WD-1066

† THE WHITE OAK VERSION OF THE MBT AND ROTH RX IS NOT IMPLIED TO BE AN EXACT VERSION OF ANY OTHER SYSTEM, NOR DO WE CLAIM ANY ENDORSEMENT BY THE DOCTORS.



COMBINATION CONVERTIBLE HG OCCLUSAL MAXILLARY 1ST MOLAR

						WELDABLE			
TORQUE	OFFSET	RX	HG I.D.	M/D	R/L	.018	.022		
-10°	8°	ROTH†	.045° OCCL	3.5MM	R L	WD-1087 WD-1085	WD-1088 WD-1086		
-10°	8°	ROTH†	.051° OCCL	3.5MM	R L	WD-1091 WD-1089	WD-1092 WD-1090		



DOUBLE CONVERTIBLE MAXILLARY 1ST MOLAR

						WELDABLE		BONDABLE			
TORQUE	OFFSET	RX	AUX TUBE	M/D	R/L	.018	.022	.018	.022		
-10°	8°	ROTH†	.018° / 0°T	3.5MM	R L	WD-1135 WD-1133	WD-1136 WD-1134	BO-1073 BO-1071	BO-1074 BO-1072		

DOUBLE CONVERTIBLE MANDIBULAR 1ST MOLAR

						WELDABLE		BONDABLE			
TORQUE	OFFSET	RX	AUX TUBE	M/D	R/L	.018	.022	.018	.022		
-25°	5°	ROTH†	.018° / 0°T	3.5MM	R L	WD-1131 WD-1129	WD-1132 WD-1130	BO-1069 BO-1067	BO-1070 BO-1068		
-20°	0°	MBT†	.018° / 0°T	3.5MM	R L	WD-1127 WD-1125	WD-1128 WD-1126	BO-1065 BO-1063	BO-1066 BO-1064		

† THE WHITE OAK VERSION OF THE MBT AND ROTH RX IS NOT IMPLIED TO BE AN EXACT VERSION OF ANY OTHER SYSTEM, NOR DO WE CLAIM ANY ENDORSEMENT BY THE DOCTORS.



COMBINATION NON-CONVERTIBLE HG OCCLUSAL MAXILLARY 1ST MOLAR						WELDABLE	
TORQUE	OFFSET	RX	HG I.D.	M/D	R/L	.018	.022
0°	0°		.045° OCCL	3.5MM	R L	WD-1098 WD-1094	WD-1100 WD-1096
0°	0°		.051° OCCL	3.5MM	R L	WD-1097 WD-1093	WD-1099 WD-1095
0°	8°		.045° OCCL	3.5MM	R L	WD-1106 WD-1102	WD-1108 WD-1104
0°	8°		.051° OCCL	3.5MM	R L	WD-1105 WD-1101	WD-1107 WD-1103
-10°	8°	ROTH†	.045° OCCL	3.5MM	R L	WD-1114 WD-1110	WD-1116 WD-1112
-10°	8°	ROTH†	.051° OCCL	3.5MM	R L	WD-1113 WD-1109	WD-1115 WD-1111
-14°	10°	MBT†	.045° OCCL	3.5MM	R L	WD-1122 WD-1118	WD-1124 WD-1120
-14°	10°	MBT†	.051° OCCL	3.5MM	R L	WD-1121 WD-1117	WD-1123 WD-1119

* THE WHITE OAK VERSION OF THE RICKETTS RX IS NOT IMPLIED TO BE AN EXACT VERSION OF ANY OTHER SYSTEM, NOR DO WE CLAIM ANY ENDORSEMENT BY THE DOCTOR



SINGLE NON-CONVERTIBLE MAXILLARY 1ST MOLAR					WELDABLE		BONDABLE: LARGE BASE		BONDABLE: SMALL BASE		RECTANGULAR BASE	
TORQUE	OFFSET	RX	M/D	R/L	.018	.022	.018	.022	.018	.022	.018	.022
0°	0°		3.5MM	R L	WD-1213 WD-1211	WD-1214 WD-1212	BO-1175 BO-1173	BO-1176 BO-1174	BO-1183 BO-1181	BO-1184 BO-1182	BO-1179 BO-1177	BO-1180 BO-1178
0°	8°		3.5MM	R L	WD-1217 WD-1215	WD-1218 WD-1216						
-10°	8°	ROTH†	3.5MM	R L	WD-1229 WD-1227	WD-1230 WD-1228	BO-1199 BO-1197	BO-1200 BO-1198	BO-1207 BO-1205	BO-1208 BO-1206	BO-1203 BO-1201	BO-1204 BO-1202
-10°	0°		3.5MM	R L	WD-1221 WD-1219	WD-1222 WD-1220						
-14°	10°	MBT†	3.5MM	R L	WD-1225 WD-1229	WD-1226 WD-1224	BO-1187 BO-1185	BO-1188 BO-1186	BO-1195 BO-1193	BO-1196 BO-1194	BO-1191 BO-1189	BO-1192 BO-1190

SINGLE NON-CONVERTIBLE MANDIBULAR 1ST AND 2ND MOLAR					WELDABLE		BONDABLE: LARGE BASE		BONDABLE: SMALL BASE		RECTANGULAR BASE	
TORQUE	OFFSET	RX	M/D	R/L	.018	.022	.018	.022	.018	.022	.018	.022
0°	0°		3.5MM	R L	WD-1197 WD-1195	WD-1198 WD-1196	BO-1151 BO-1149	BO-1152 BO-1150	BO-1155 BO-1153	BO-1156 BO-1154	BO-1159 BO-1157	BO-1160 BO-1158
0°	5°		3.5MM	R L	WD-1201 WD-1199	WD-1202 WD-1200						
-10°	0°		3.5MM	R L	WD-1205 WD-1203	WD-1206 WD-1204	BO-1139 BO-1137	BO-1140 BO-1138	BO-1143 BO-1141	BO-1144 BO-1142	BO-1147 BO-1145	BO-1148 BO-1146
-25°	5°	ROTH†	3.5MM	R L	WD-1209 WD-1207	WD-1210 WD-1208	BO-1163 BO-1161	BO-1164 BO-1162	BO-1167 BO-1165	BO-1168 BO-1166	BO-1171 BO-1169	BO-1172 BO-1170

† THE WHITE OAK VERSION OF THE MBT AND ROTH RX IS NOT IMPLIED TO BE AN EXACT VERSION OF ANY OTHER SYSTEM, NOR DO WE CLAIM ANY ENDORSEMENT BY THE DOCTORS.