



BANDS AND ATTACHMENTS

INTEGRITY

MOLAR BANDS

BY WHITE OAK ORTHODONTIC PRODUCTS, LLC

WHITE OAK'S MOLAR AND BICUSPID ANATOMICAL BAND SYSTEMS OFFER THE ULTIMATE IN COMFORT AND DURABILITY IN BANDS DESIGNED TO FIT ACCURATELY AND SECURELY.

IDEAL STAINLESS STEEL TEMPER



ANATOMICALLY CORRECT
IN ALL THREE PLANES

MICRO ETCHED
INTERIOR SURFACE



PERMANENTLY ETCHED I.D.

**FEATURES INCLUDE:**

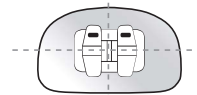
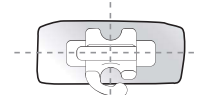
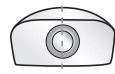
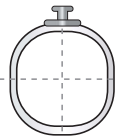

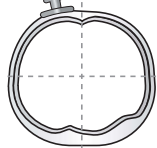
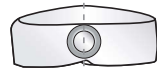
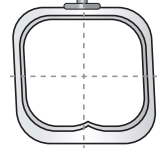
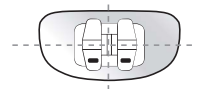
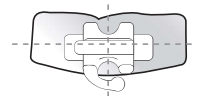
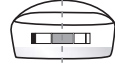
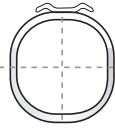

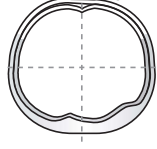

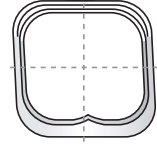
- TIGHT ACCURATE FIT, ANATOMICAL IN ALL THREE PLANES OF SPACE
- DISCRETE RIGHTS AND LEFTS FOR EACH SIZE
- ADAPTABILITY AND STIFFNESS ARE BALANCED IN HIGH QUALITY STAINLESS STEEL
- AVAILABLE IN 30 SIZES FOR EACH QUADRANT
- PERMANENT I.D. MARKINGS
- INTERIOR SURFACES MICRO-ETCHED

PRE-WELD SERVICES / AVAILABLE LOOSE OR PREWELDED

WHITE OAK OFFERS STANDARD AND CUSTOM PRE-WELDING SERVICES TO MEET ALL YOUR PRACTICE NEEDS. ALL PRE-WELD ORDERS ARE WELDED IN THE STANDARD POSITION UNLESS REQUESTED OTHERWISE.

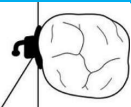
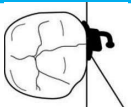
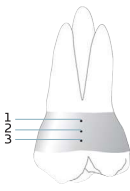
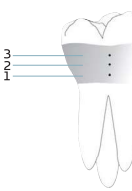
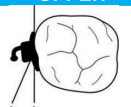
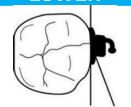
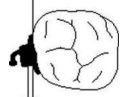
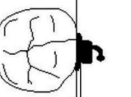
STANDARD WELD

THE DRAWINGS BELOW PROVIDE AN OVERVIEW OF THE VARIOUS STANDARD POSITIONS AND ILLUSTRATE THE ATTACHMENT WELDED AT 0° ANGULATION TO THE BAND (THE BRACKET SLOT WILL BE PARALLEL TO THE OCCLUSAL EDGE OF THE BAND).

| BUCCAL ATTACHMENTS | | LINGUAL ATTACHMENTS | | |
|---|--|--|--|--|
| BRACKET TO BICUSPID | BUCCAL TUBE TO UPPER MOLAR | BICUSPIDS | LOWER MOLAR | UPPER MOLAR |
|  <p>UPPER BICUSPID: CENTERED</p> |  <p>UPPER MOLAR: ENTRANCE TO BUCCAL TUBE WILL BISECT THE MESIAL / BUCCAL CUSP</p> | <p>GINGIVAL</p>  <p>OCCLUSAL</p>  <p>MESIAL DISTAL</p> <p>BUTTON: CENTERED</p> | <p>GINGIVAL</p>  <p>OCCLUSAL</p>  <p>MESIAL DISTAL</p> <p>BUTTON: BISECT THE MESIOLINGUAL CUSP</p> | <p>GINGIVAL</p>  <p>OCCLUSAL</p>  <p>MESIAL DISTAL</p> <p>BUTTON: CENTERED</p> |
|  <p>LOWER 1ST BICUSPID: CENTERED</p> | <p>BUCCAL TUBE TO LOWER MOLAR</p>  <p>LOWER MOLAR: ENTRANCE TO BUCCAL TUBE WILL BISECT THE MESIAL/ BUCCAL CUSP</p> | <p>GINGIVAL</p>  <p>OCCLUSAL</p>  <p>MESIAL DISTAL</p> <p>CLEAT: CENTERED</p> | <p>GINGIVAL</p>  <p>OCCLUSAL</p>  <p>MESIAL DISTAL</p> <p>CLEAT: CENTERED</p> | <p>GINGIVAL</p>  <p>OCCLUSAL</p>  <p>MESIAL DISTAL</p> <p>CLEAT: CENTERED</p> |

CUSTOM WELD

CUSTOM ASSEMBLIES ARE ANY OF WHITE OAK'S TUBES AND BANDS THAT ARE NOT PRE-WELDED IN THE STANDARD POSITION. USING THE CHART BELOW, CHOOSE THE APPROPRIATE PRE-WELD POSITION.

| STEP 1 | | STEP 2 | | | | | | | | |
|--|---|---|--------------|--|---|---|---|----------------------------|----------|----------------------------|
| CHOOSE YOUR MESIAL / DISTAL POSITIONING | | CHOOSE YOUR HEIGHT PLACEMENT | | | | | | | | |
| MESIAL | UPPER | UPPER | LOWER | ARCHWIRE LOCATION | | | | | | |
| TWO MILLIMETERS OF FORWARD (MESIAL) PLACEMENT OF THE BUCCAL TUBE ON THE BAND WILL ADD APPROXIMATELY 10 DEGREES OF DISTAL OFFSET. |  |  | | <table border="1"> <thead> <tr> <th>1</th> <th>2</th> <th>3</th> </tr> </thead> <tbody> <tr> <td>50% GINGIVAL FROM STANDARD</td> <td>STANDARD</td> <td>50% OCCLUSAL FROM STANDARD</td> </tr> </tbody> </table> | 1 | 2 | 3 | 50% GINGIVAL FROM STANDARD | STANDARD | 50% OCCLUSAL FROM STANDARD |
| 1 | 2 | 3 | | | | | | | | |
| 50% GINGIVAL FROM STANDARD | STANDARD | 50% OCCLUSAL FROM STANDARD | | | | | | | | |
| STANDARD | UPPER | LOWER | |  <p>UPPER</p>  <p>LOWER</p> | | | | | | |
| THE STANDARD WELDING POSITION IS DESIGNED TO DELIVER THE DISTAL OFFSET MANUFACTURED INTO THE BUCCAL TUBE. |  |  | | | | | | | | |
| DISTAL | UPPER | LOWER | | | | | | | | |
| TWO MILLIMETERS OF BACKWARD (DISTAL) PLACEMENT OF THE BUCCAL TUBE ON THE BAND WILL SUBTRACT APPROXIMATELY 10 DEGREES OF DISTAL OFFSET. |  |  | | | | | | | | |

INTEGRITY MOLAR BAND KITS

WHITE OAK HAS BAND KITS IN FOUR ASSORTMENT SIZES FROM 80 TO 600 TOTAL BANDS. EACH KIT INCLUDES RIGHT AND LEFT MOLAR BANDS IN A WEIGHTED ASSORTMENT OF SIZES. WHITE OAK ATTACHMENTS LASER WELDED WITHOUT CHARGE.

STARTER KIT

270 TOTAL BANDS
135 LEFTS AND 135 RIGHTS
SIZES 31 - 44



MAXILLARY 1ST + 2ND MOLAR BANDS

| CATALOG NO./TYPE | 31 | 31½ | 32 | 32½ | 33 | 33½ | 34 | 34½ | 35 | 35½ | 36 | 36½ | 37 | 37½ | 38 | 38½ | 39 | 39½ | 40 | 40½ | 41 | 41½ | 42 | 42½ | 43 | 43½ | 44 |
|------------------|----|-----|----|-----|----|-----|----|-----|----|-----|----|-----|----|-----|----|-----|----|-----|----|-----|----|-----|----|-----|----|-----|----|
| BD-1033K (270) | 10 | 10 | 10 | 10 | 10 | 10 | 10 | 10 | 10 | 10 | 10 | 10 | 10 | 10 | 10 | 10 | 10 | 10 | 10 | 10 | 10 | 10 | 10 | 10 | 10 | 10 | 10 |



MANDIBULAR 1ST MOLAR BANDS

| CATALOG NO./TYPE | 31 | 31½ | 32 | 32½ | 33 | 33½ | 34 | 34½ | 35 | 35½ | 36 | 36½ | 37 | 37½ | 38 | 38½ | 39 | 39½ | 40 | 40½ | 41 | 41½ | 42 | 42½ | 43 | 43½ | 44 |
|------------------|----|-----|----|-----|----|-----|----|-----|----|-----|----|-----|----|-----|----|-----|----|-----|----|-----|----|-----|----|-----|----|-----|----|
| BD-1033K (270) | 10 | 10 | 10 | 10 | 10 | 10 | 10 | 10 | 10 | 10 | 10 | 10 | 10 | 10 | 10 | 10 | 10 | 10 | 10 | 10 | 10 | 10 | 10 | 10 | 10 | 10 | 10 |



MANDIBULAR 2ND MOLAR BANDS

| CATALOG NO./TYPE | 29½ | 30 | 30½ | 31 | 31½ | 32 | 32½ | 33 | 33½ | 34 | 34½ | 35 | 35½ | 36 | 36½ | 37 | 37½ | 38 | 38½ | 39 | 39½ | 40 | 40½ | 41 | 41½ | 42 | 42½ | 43 | 43½ | 44 |
|------------------|-----|----|-----|----|-----|----|-----|----|-----|----|-----|----|-----|----|-----|----|-----|----|-----|----|-----|----|-----|----|-----|----|-----|----|-----|----|
| BD-1012K (150) | 2 | 2 | 2 | 2 | 2 | 2 | 4 | 4 | 6 | 8 | 10 | 10 | 10 | 10 | 12 | 12 | 10 | 8 | 6 | 4 | 4 | 4 | 2 | 2 | 2 | 2 | 2 | 2 | 2 | 2 |

| INDIVIDUAL INTEGRITY MOLAR BANDS | | | | | | |
|----------------------------------|---------------------------|---------|----------------------|---------|----------------------|---------|
| | MAXILLARY 1ST + 2ND MOLAR | | MANDIBULAR 1ST MOLAR | | MANDIBULAR 2ND MOLAR | |
| SIZE | LEFT | RIGHT | LEFT | RIGHT | LEFT | RIGHT |
| 29.5 | BD-1203 | BD-1263 | BD-1059 | BD-1119 | BD-1089 | BD-1149 |
| 30 | BD-1204 | BD-1264 | BD-1060 | BD-1120 | BD-1090 | BD-1150 |
| 30.5 | BD-1205 | BD-1265 | BD-1061 | BD-1121 | BD-1091 | BD-1151 |
| 31 | BD-1206 | BD-1266 | BD-1062 | BD-1122 | BD-1092 | BD-1152 |
| 31.5 | BD-1207 | BD-1267 | BD-1063 | BD-1123 | BD-1093 | BD-1153 |
| 32 | BD-1208 | BD-1268 | BD-1064 | BD-1124 | BD-1094 | BD-1154 |
| 32.5 | BD-1209 | BD-1269 | BD-1065 | BD-1125 | BD-1095 | BD-1155 |
| 33 | BD-1210 | BD-1270 | BD-1066 | BD-1126 | BD-1096 | BD-1156 |
| 33.5 | BD-1211 | BD-1271 | BD-1067 | BD-1127 | BD-1097 | BD-1157 |
| 34 | BD-1212 | BD-1272 | BD-1068 | BD-1128 | BD-1098 | BD-1158 |
| 34.5 | BD-1213 | BD-1273 | BD-1069 | BD-1129 | BD-1099 | BD-1159 |
| 35 | BD-1214 | BD-1274 | BD-1070 | BD-1130 | BD-1100 | BD-1160 |
| 35.5 | BD-1215 | BD-1275 | BD-1071 | BD-1131 | BD-1101 | BD-1161 |
| 36 | BD-1216 | BD-1276 | BD-1072 | BD-1132 | BD-1102 | BD-1162 |
| 36.5 | BD-1217 | BD-1277 | BD-1073 | BD-1133 | BD-1103 | BD-1163 |
| 37 | BD-1218 | BD-1278 | BD-1074 | BD-1134 | BD-1104 | BD-1164 |
| 37.5 | BD-1219 | BD-1279 | BD-1075 | BD-1135 | BD-1105 | BD-1165 |
| 38 | BD-1220 | BD-1280 | BD-1076 | BD-1136 | BD-1106 | BD-1166 |
| 38.5 | BD-1221 | BD-1281 | BD-1077 | BD-1137 | BD-1107 | BD-1167 |
| 39 | BD-1222 | BD-1282 | BD-1078 | BD-1138 | BD-1108 | BD-1168 |
| 39.5 | BD-1223 | BD-1283 | BD-1079 | BD-1139 | BD-1109 | BD-1169 |
| 40 | BD-1224 | BD-1284 | BD-1080 | BD-1140 | BD-1110 | BD-1170 |
| 40.5 | BD-1225 | BD-1285 | BD-1081 | BD-1141 | BD-1111 | BD-1171 |
| 41 | BD-1226 | BD-1286 | BD-1082 | BD-1142 | BD-1112 | BD-1172 |
| 41.5 | BD-1227 | BD-1287 | BD-1083 | BD-1143 | BD-1113 | BD-1173 |
| 42 | BD-1228 | BD-1288 | BD-1084 | BD-1144 | BD-1114 | BD-1174 |
| 42.5 | BD-1229 | BD-1289 | BD-1085 | BD-1145 | BD-1115 | BD-1175 |
| 43 | BD-1230 | BD-1290 | BD-1086 | BD-1146 | --- | --- |
| 43.5 | BD-1231 | BD-1291 | BD-1087 | BD-1147 | --- | --- |
| 44 | BD-1232 | BD-1292 | BD-1088 | BD-1148 | --- | --- |

† PREWELDED BANDS ARE FINAL SALES AND ARE NOT RETURNABLE FOR CREDIT.

INTEGRITY BICUSPID BAND KITS

WHITE OAK HAS BAND KITS IN FOUR ASSORTMENT SIZES FROM 80 TO 600 TOTAL BANDS. EACH KIT INCLUDES RIGHT AND LEFT MOLAR BANDS IN A WEIGHTED ASSORTMENT OF SIZES. WHITE OAK ATTACHMENTS LASER WELDED WITHOUT CHARGE.

- TIGHT ACCURATE FIT, ANATOMICAL IN ALL THREE PLANES OF SPACE
- DISCRETE RIGHTS AND LEFTS FOR EACH SIZE
- ADAPTABILITY AND STIFFNESS ARE BALANCED IN HIGH QUALITY STAINLESS STEEL
- AVAILABLE IN 24 SIZES FOR EACH QUADRANT
- PERMANENT I.D. MARKINGS
- INTERIOR SURFACES MICRO-ETCHED

| TRIAL KIT | INTRO KIT | PRO KIT | MASTER KIT |
|--|---|---|---|
| 80 TOTAL BANDS 40 LEFTS AND 40 RIGHTS SIZES 6-20 | 150 TOTAL BANDS 75 LEFTS AND 75 RIGHTS SIZES 1-32 | 300 TOTAL BANDS 150 LEFTS AND 150 RIGHTS SIZES 1-32 | 600 TOTAL BANDS 300 LEFTS AND 300 RIGHTS SIZES 1-32 |

MAXILLIARY 1ST + 2ND BICUSPID BANDS



| CATALOG NO./TYPE | 1 | 2 | 3 | 4 | 5 | 6 | 7 | 8 | 9 | 10 | 11 | 12 | 13 | 14 | 15 | 16 | 17 | 18 | 19 | 20 | 21 | 22 | 23 | 24 |
|-----------------------|---|---|----|----|----|----|----|----|----|----|----|----|----|----|----|----|----|----|----|----|----|----|----|----|
| TRIAL BD-1034K (80) | - | - | 2 | 2 | 2 | 4 | 4 | 4 | 6 | 6 | 6 | 8 | 8 | 6 | 4 | 4 | 4 | 2 | 2 | 2 | 2 | 2 | - | - |
| INTRO BD-1016K (150) | 2 | 2 | 4 | 4 | 4 | 6 | 6 | 8 | 10 | 10 | 12 | 12 | 12 | 10 | 10 | 8 | 6 | 6 | 4 | 4 | 4 | 2 | 2 | 2 |
| PRO BD-1022K (300) | 4 | 4 | 8 | 8 | 8 | 12 | 12 | 16 | 20 | 20 | 24 | 24 | 24 | 20 | 20 | 16 | 12 | 12 | 8 | 8 | 8 | 4 | 4 | 4 |
| MASTER BD-1028K (600) | 8 | 8 | 16 | 16 | 16 | 24 | 24 | 32 | - | - | - | - | - | - | - | 32 | 24 | 24 | 16 | 16 | 16 | 8 | 8 | 8 |

MANDIBULAR 1ST + 2ND BICUSPID BANDS



| CATALOG NO./TYPE | 1 | 2 | 3 | 4 | 5 | 6 | 7 | 8 | 9 | 10 | 11 | 12 | 13 | 14 | 15 | 16 | 17 | 18 | 19 | 20 | 21 | 22 | 23 | 24 |
|-----------------------|---|---|----|----|----|----|----|----|----|----|----|----|----|----|----|----|----|----|----|----|----|----|----|----|
| TRIAL BD-1031K (80) | - | - | 2 | 2 | 2 | 4 | 4 | 4 | 6 | 6 | 6 | 8 | 8 | 6 | 4 | 4 | 4 | 2 | 2 | 2 | 2 | 2 | - | - |
| INTRO BD-1013K (150) | 2 | 2 | 4 | 4 | 4 | 6 | 6 | 8 | 10 | 10 | 12 | 12 | 12 | 10 | 10 | 8 | 6 | 6 | 4 | 4 | 4 | 2 | 2 | 2 |
| PRO BD-1019K (300) | 4 | 4 | 8 | 8 | 8 | 12 | 12 | 16 | 20 | 20 | 24 | 24 | 24 | 20 | 20 | 16 | 12 | 12 | 8 | 8 | 8 | 4 | 4 | 4 |
| MASTER BD-1025K (600) | 8 | 8 | 16 | 16 | 16 | 24 | 24 | 32 | - | - | - | - | - | - | - | 32 | 24 | 24 | 16 | 16 | 16 | 8 | 8 | 8 |

INTEGRITY INDIVIDUAL BICUSPID BANDS

| UPPER/LOWER BICUSPID | | | UPPER/LOWER BICUSPID | | | UPPER/LOWER BICUSPID | | |
|----------------------|---------|---------|----------------------|---------|---------|----------------------|---------|---------|
| SIZE | UPPER | LOWER | SIZE | UPPER | LOWER | SIZE | UPPER | LOWER |
| 1 | BD-1179 | BD-1035 | 9 | BD-1187 | BD-1043 | 17 | BD-1195 | BD-1051 |
| 2 | BD-1180 | BD-1036 | 10 | BD-1188 | BD-1044 | 18 | BD-1196 | BD-1052 |
| 3 | BD-1181 | BD-1037 | 11 | BD-1189 | BD-1045 | 19 | BD-1197 | BD-1053 |
| 4 | BD-1182 | BD-1038 | 12 | BD-1190 | BD-1046 | 20 | BD-1198 | BD-1054 |
| 5 | BD-1183 | BD-1039 | 13 | BD-1191 | BD-1047 | 21 | BD-1199 | BD-1055 |
| 6 | BD-1184 | BD-1040 | 14 | BD-1192 | BD-1048 | 22 | BD-1200 | BD-1056 |
| 7 | BD-1185 | BD-1041 | 15 | BD-1193 | BD-1049 | 23 | BD-1201 | BD-1057 |
| 8 | BD-1186 | BD-1042 | 16 | BD-1194 | BD-1050 | 24 | BD-1202 | BD-1058 |

LINGUAL SHEATHS

OUR LINGUAL SHEATHS ARE DESIGNED TO ACCEPT PALATAL BARS, QUAD HELIX APPLIANCES, AND OTHER MAXILLARY AND MANDIBULAR REMOVABLE FORMAT APPLIANCES INCORPORATING .036" X .072" DISTAL ENGAGEMENT ENDS. LOCKING INDENT AND OPTIONAL SOLDERED POST ENSURE SECURE RETENTION.

WELDABLE ONLY



LINGUAL SHEATH WITH WINDOW AND INDENT

UNIVERSAL


ORDER NUMBER **WD-1060**



LINGUAL SHEATH WITH NO WINDOW WITH INDENT

UNIVERSAL

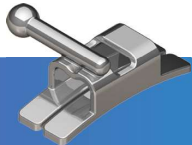
ORDER NUMBER **WD-1059**



LINGUAL SHEATH WITH WINDOW, INDENT AND MESIAL BALL HOOK

UR/LL ORDER NUMBER **WD-1064**

UL/LR ORDER NUMBER **WD-1063**



LINGUAL SHEATH WITH WINDOW, INDENT AND DISTAL BALL HOOK

UR/LL ORDER NUMBER **WD-1062**

UL/LR ORDER NUMBER **WD-1061**



SEATING LUGS

LUGS AID IN THE SEATING AND POSITIONING OF BANDS.

AVAILABLE INDIVIDUALLY OR PRE-WELDED

3.8MM ORDER NUMBER WD-1057



BALL CLASP

PRE-FORMED RETAINER CLASPS FEATURE A SMOOTH ROUNDED HEAD FOR COMFORT.

3.8MM ORDER NUMBER MS-1002

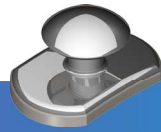


CLEATS

THESE CLEATS FEATURE ELEVATED WINGS AT EACH END FOR EASY TYING OF AUXILLIARIES

WELDABLE

ORDER NUMBER **WD-1055**

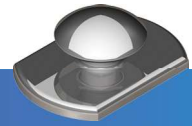


BUTTON SEMI-FLAT

THE DOMED HEAD ALLOWS FOR MAXIMUM PATIENT COMFORT.

WELDABLE ORDER NUMBER **WD-1054**

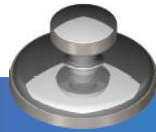
BONDABLE ORDER NUMBER **BO-1002**



**BUTTON SEMI-FLAT
LOW PROFILE**

THE DOMED HEAD ALLOWS FOR MAXIMUM PATIENT COMFORT.

WELDABLE ORDER NUMBER **WD-1053**



MINI

THE DOMED HEAD ALLOWS FOR MAXIMUM PATIENT COMFORT.

BONDABLE ORDER NUMBER **BO-1001**



COIL EYELET

BONDABLE ORDER NUMBER **BO-1332**



CERAMIC BUTTON

AN AESTHETIC BUTTON

BONDABLE 10 PACK **BO-1330**



**CERAMIC BUTTON
LOW PROFILE**

AN AESTHETIC BUTTON

BONDABLE ORDER NUMBER **BO-1333**



CERAMIC EYELET

AN AESTHETIC EYELET

BONDABLE 10 PACK **BO-1331**



PLASTIC BAND ORGANIZER WITH LID

WHITE OAK'S PLASTIC BAND ORGANIZERS ARE DESIGNED FOR PROPER BAND STORAGE AND WILL FIT MOST BAND CABINETS.

INTEGRITY PLASTIC MOLAR BAND ORGANIZER MS-1004
INTEGRITY PLASTIC BICUSPID BAND ORGANIZER MS-1003



STACKABLE BAND ORGANIZER

- MODULAR INTERLOCKING DESIGN
- CONSTRUCTED WITH HIGH QUALITY DURABLE PLASTIC
- ACCOMMODATES OUR PLASTIC BAND ORGANIZER (ORDERED SEPARATELY)

STACKABLE BAND ORGANIZER MS-1005